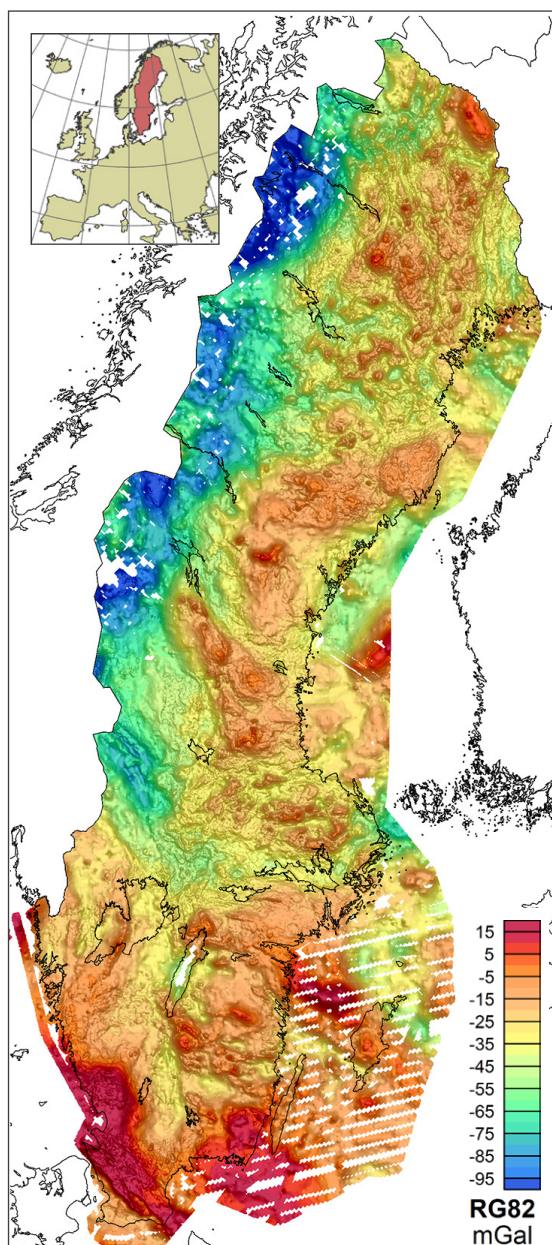


# Gravity map of Sweden

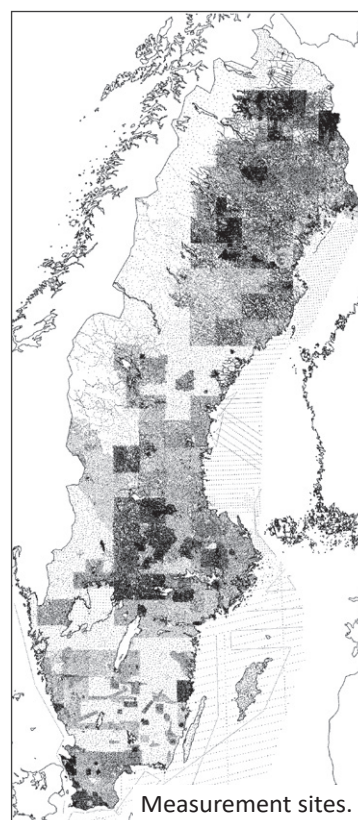
February 2021



## Bouger anomaly RG82

The map is based on gravity measurements available in the Geological Survey of Sweden's (SGU) database. The measurements have been carried out by SGU, Swedish National Land Survey, SKB, OPAB, Uppsala University, Luleå University of Technology, Stockholm University, Royal Institute of Technology, Finnish Geodetic Institute, LKAB, Boliden AB and Zinkgruvan Mining AB.

**Number of regional measurement sites:** approx. 194 000  
**Grid:** 500 x 500 m  
**Illumination:** D=15° and I=85°  
**Database:** sw2011



Visit our digital Map viewer at [www.sgu.se/mapviewer](http://www.sgu.se/mapviewer)