

ETHIOPIA



GENERAL MINE CLOSURE PLAN GUIDELINE FOR ETHIOPIA

Alemayehu Oljira
Enatfenta Melaku
Gera Techane
Hambaye Wakgari
Indalkacho Mangasha
Megersa Bekele
Merertu Fikadu
Tadesse Teshome



INTERNATIONAL TRAINING PROGRAMME 308

Mine Water & Mine Waste Management



Sweden
Sverige

SGU
Sveriges geologiska undersökning
Geological Survey of Sweden

Sida

SWEDISH ENVIRONMENTAL
PROTECTION AGENCY

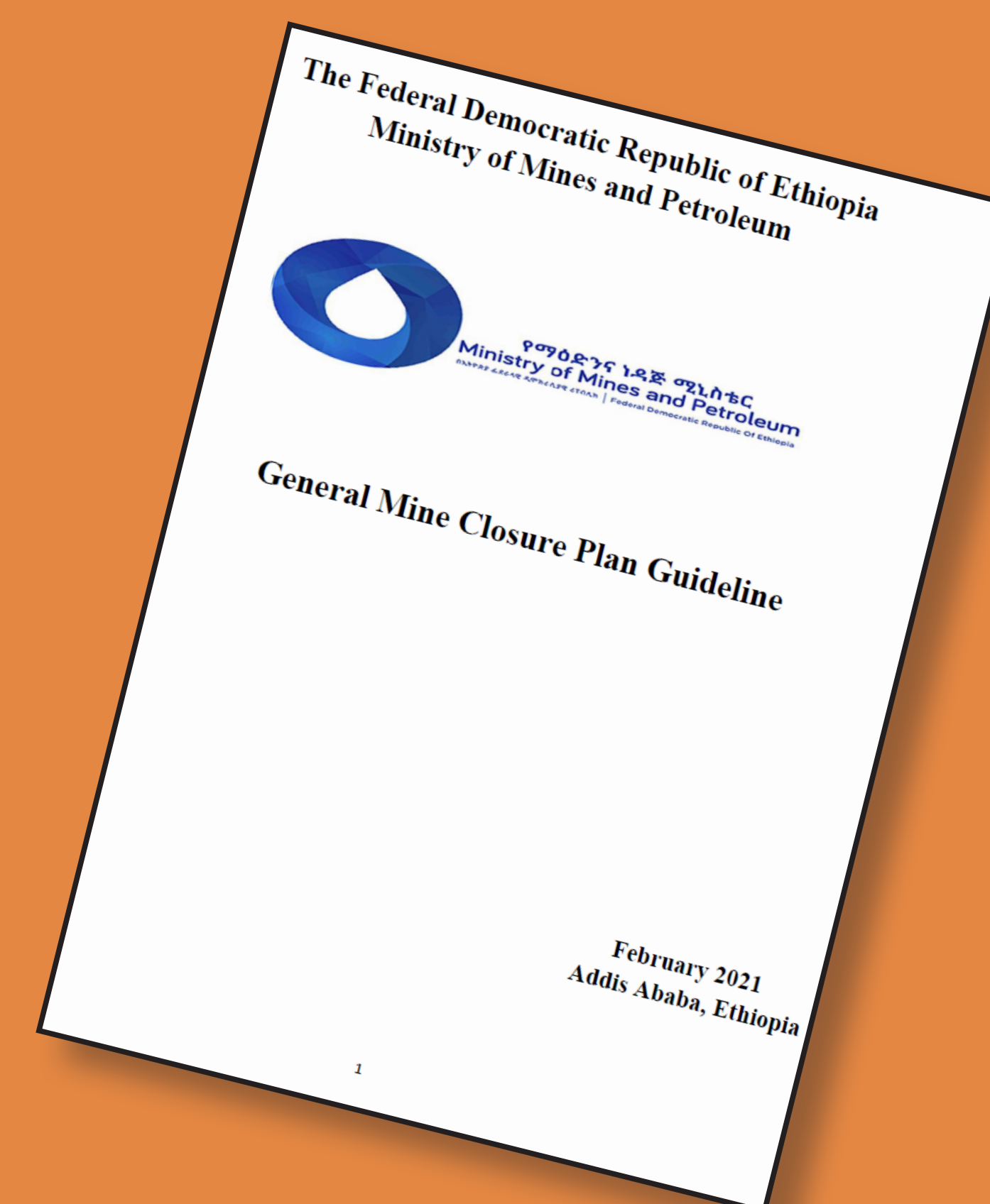
LULEÅ
UNIVERSITY
OF TECHNOLOGY



THE CHANGE PROJECT

Planning for mine closure is a critical component of environmental management of mines. Successful mine closure is important for society, industry and the environment. Mine closure planning should start before mining commences and its activities should continue throughout the life of the mine until final closure and relinquishment. This will enable better environmental outcomes and avoid the need for costly remedial works late in the project lifecycle. Recognizing the importance of this issue, experts of the Ministry of Mines and Petroleum (MoMP) and Oromia Mine Development Authority (OMDA) jointly drafted a Guideline for Preparation of Mine Closure Plans as part of the training programme for Mine Water & Mine Waste Management.

Ethiopia has an ambitious target for enabling the mining sector to contribute 10 percent of the GDP by 2025 through a core value of environmentally sustainable manner. Inline with these values, the guideline aims to provide detailed instructions on how to develop a mine rehabilitation or closure plan that contributes to sustainable mining industry at the early design of the mine.



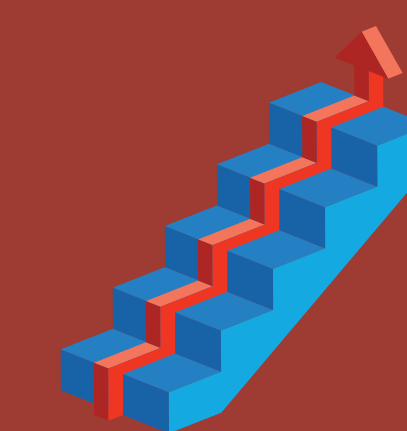
The change project team members with programme officers.



SIGNIFICANCE FOR THE PEOPLE AND THE ENVIRONMENT

If the mine is properly closed possible health hazards will be eliminated and biodiversity can be restored to pre-mining conditions; landforms, landscape and a sustainable living environment for people and organisms can be created. Proper mine closure is an important pillar in environmental management of mines and has big impact on people and nature.

The guideline will help the regulatory body and the mining companies to identify responsibilities, legal requirements and risks; considering bankruptcy, transfer of ownership, care and maintenance, availability of manpower or machinery or other changing circumstances. It will indicate costs and financial guarantees required to implement the mine closure activities.



RESULTS AND ACHIEVEMENTS

Presentation of the draft document has been conducted on January 7/2020 to get constructive feedback from the Environment and Climate Change Directorate staffs. A consultative workshop on the applicability of the guideline in the context of our mining has been held on February 20/2020 with selected directorates of the ministry and Oromia Mine Development Authority. The participants of the workshop have been appreciated and also commented on the guideline. Especially the participants from the legal affair directorate of the ministry have raised the issue of enforcing power of the guideline and promised to plan with Environment directorate to prepare a directive out of the prepared guideline.

Work has started to present the result of the change project in the form of a General Guideline of Mine Closure Plan to the related key stakeholders and mining companies. This guideline will be available to all mining companies, federal and regional environmental protection authorities, federal and regional mine offices and other concerned bodies.



THE WAY FORWARD

The guideline aims to help with closing mines in Ethiopia. It is intended to aid companies and authorities to plan and assess mine closure. It is recommended for a proponent to follow the guideline. If departure from any item in this guideline is chosen it should be explained in detail, particularly with respect to why such departure is necessary. To develop an estimate of closure costs, a proponent must have sufficient detail for each item to provide defensible basis for the costs. The guideline does not replace national law and regulations concerning mine closure or environmental protection.

Before disseminating the guideline additional consultation will be made with Regional Mine Bureaus, mining companies, local communities and other key stakeholders.

One page of mine closure program has been reported by mining companies as part of Environmental Impact Assessment (EIA). Even the environment and climate directorate working under the ministry didn't have awareness about planning mine closure before the mining commenced. So this guideline is anticipated to aid companies and authorities to plan and assess mine closure and submit a separate or detailed mine closure activities together with its cost before the mine start.

Photograph showing open-pit mining at Legadembi.

