

RWANDA



Register for inventory of operating and decommissioned tailing management facilities

Rwanda Mines Petroleum and Gas Board (RMB) and Rwanda Environment Management Authority (REMA)

Janvier Habineza Aline Niwemfurayase
Fidele Muhirwa Jean-Paul Mbaraga



INTERNATIONAL TRAINING PROGRAMME 308
Mine Water & Mine Waste Management

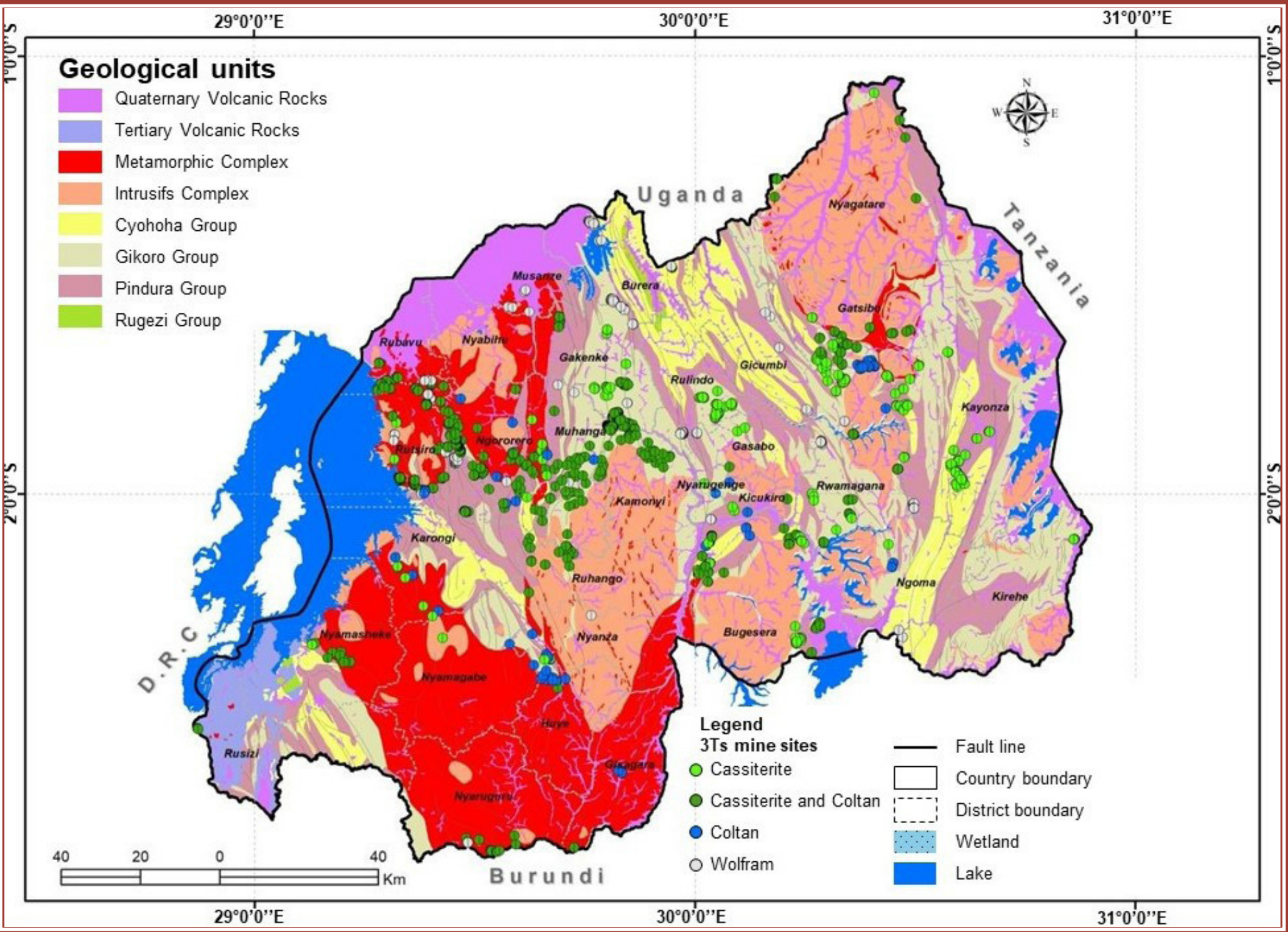


THE CHANGE PROJECT

Rwanda is one of the largest producers of 3Ts. Rwanda is one of the largest producers of 3Ts. The mining sector account for Rwanda’s second largest export revenues. Cassiterite, coltan, wolframite, gold, beryl, lithium, amethyst, amblygonite and tourmaline are amongst other the minerals and metals mined in Rwanda.

Among the challenges faced by the mining sector in Rwanda is the poor tailings management. RMB and REMA are developing a register for active and decommissioned tailings management facilities.

The tailing management facility register is based on the Global Industry Standard on Tailings Management (GISTM) developed by the International Council on Mining & Metals (ICMM), the United Nations environment program (UNEP) and the Principles for Responsible Investment (PRI).



	A	B	C	D	E	J	K
1	Site characteristics						
	Tailings Facility name	Mine name	Primary commodity	By-product 1	By-product 2	status	Construction year
2							
3							
4	CYABINGO MINING	CYABINGO MINING	Tantalum-Tin ore	Iron	Niobium	Active	2020
5	M&M GAKENKE	M&M GAKENKE	Tantalum-Tin ore	Iron	Niobium	Active	2018
6	EPROCOMI	EPROCOMI	Tantalum-Tin ore	Iron	Niobium	Active	2017
7	GREAT LAKES MINERALS	GREAT LAKES MINERALS	Tantalum-Tin ore	Iron	Niobium	Active	2015
8	COMIKAGI Cooperative	COMIKAGI Cooperative	Tantalum-Tin ore	Iron	Niobium	Active	2021
9							
10							
11							
12							
13							

SIGNIFICANCE FOR THE PEOPLE AND THE ENVIRONMENT

A Tailing Management System is a comprehensive framework to integrate the people, resources, processes, and practices related to tailings management to enable mine owners to achieve their performance objectives, manage risks, and ensure safe, responsible management of tailings and at the same time minimise negative impacts to the people and the environment.

The register will also be a new tool for regulators (RMB and REMA) to exercise appropriate oversight of tailings management facilities.



RESULTS AND ACHIEVEMENTS

A tailings management facility guideline has been developed by previous ITP308 cohorts from RMB and REMA and some stakeholders were consulted during the development of the guideline.

This register has been tested on five mine sites and will continue to be tested and develop further according to the field test and stakeholder engagement process.

AC	AD	AE	AF
Is there a) a closure plan in place for this dam, and b) does it include long term monitoring?	Is the TSF Extreme weather secure	Nearest Town/Water Course/Wetland in Km	Any other relevant information and supporting documentation.
a) yes, b) yes	No	No	Need for reprocessing
a) yes, b) yes	No	Yes	Transportation for second use
a) yes, b) yes	No	Yes	Reprocessing
a) yes, b) yes	No	Yes	Scattered
a) yes, b) yes	No	Yes	Need for reprocessing

THE WAY FORWARD

Additional stakeholder engagement should be conducted in order to test this tailings management facility register and improve it usage. Once approved, implementation of the registry should be enforced appropriately, with regular review process.

