

# RWANDA



## Guidelines of Tailings Management in the Small-Scale Mining Sector in Rwanda - V2.0

Rwanda Mines Petroleum and Gas Board (RMB)  
and Rwanda Environment Management  
Authority (REMA)

Nicole Umulisa

Mireille S. Nikuze

Jean Marie V. Tuyisenge

Gloriose R. Iragena



**INTERNATIONAL TRAINING  
PROGRAMME 308**  
Mine Water & Mine Waste Management



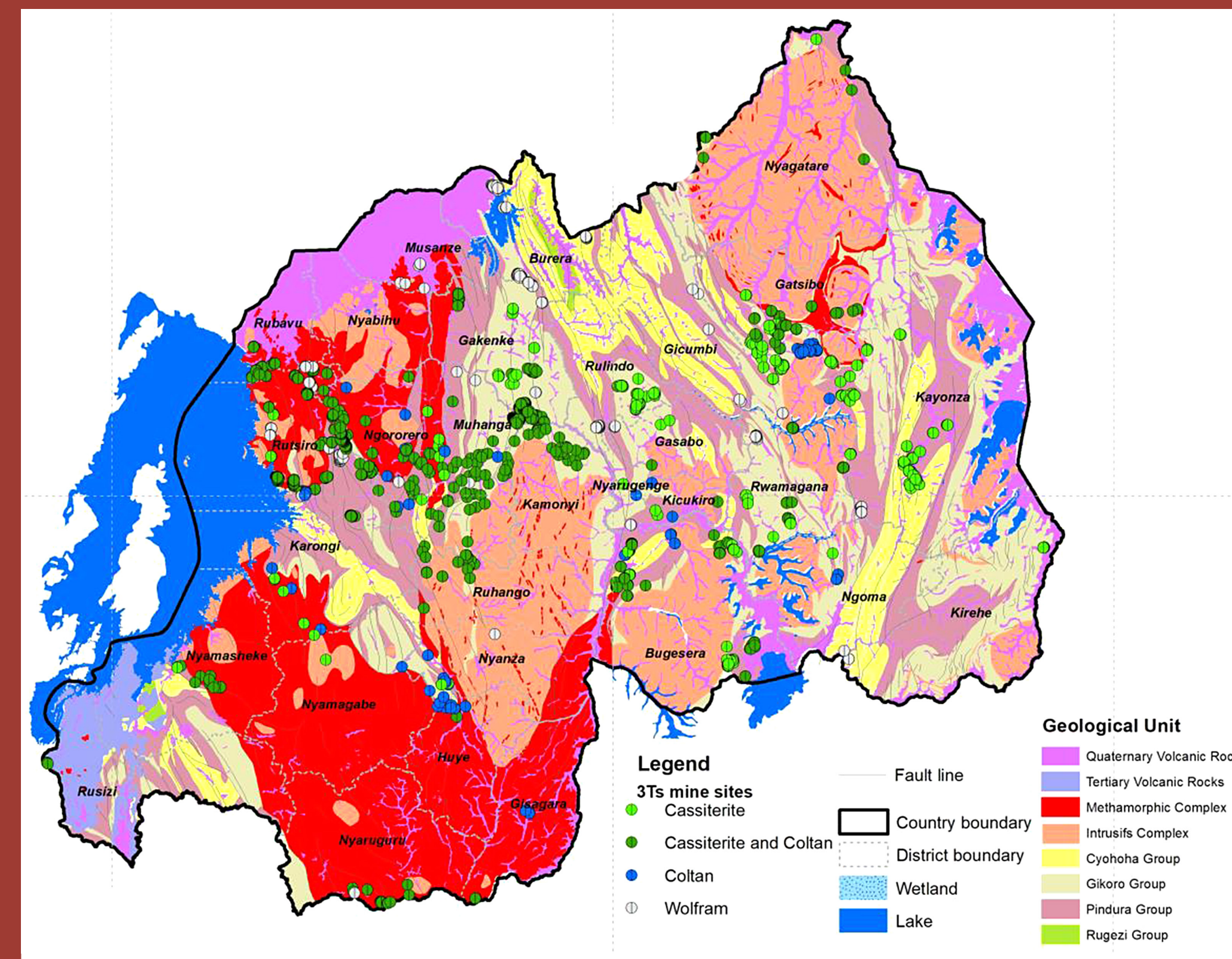
Sweden  
Sverige



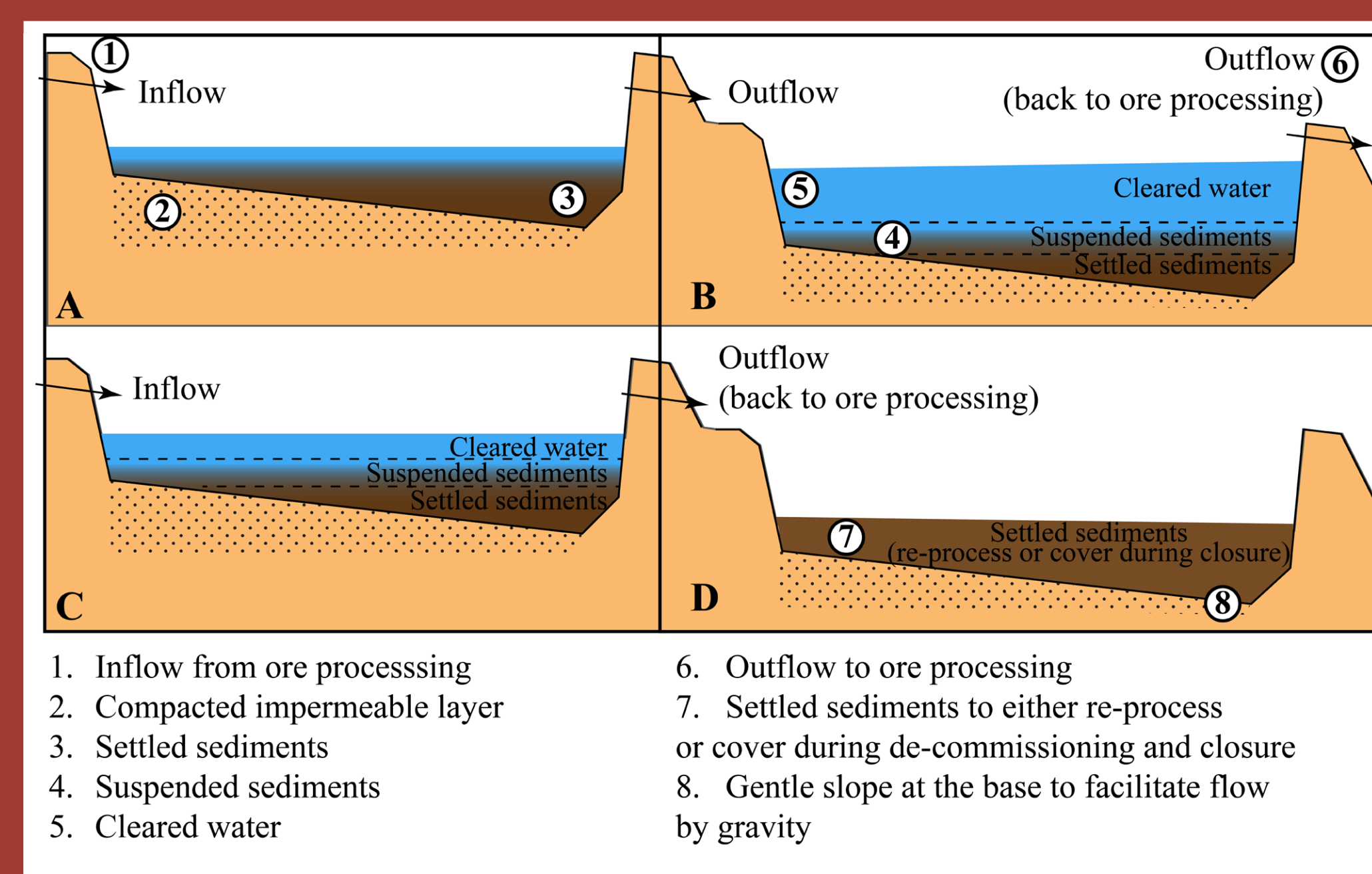
## THE CHANGE PROJECT

Rwanda is one of the largest producers of 3Ts. The mining sector account for Rwanda's second largest export revenues. Cassiterite, coltan, wolframite, gold, beryl, lithium, amethyst, amblygonite and tourmaline are amongst other the minerals and metals mined in Rwanda. Among the challenges faced by the mining sector in Rwanda is the poor tailings management. Rwanda Mines Petroleum and Gas Board is developing guidelines for appropriate tailings management in the mining sector.

To ensure that guidelines are respected by mining operators, trainings for mine operators and other relevant stakeholders will be put in place for capacity building and to ensure their effective compliance to the tailing management guidelines.



Geological map of Rwanda. The coloured circles are the location of mine sites. Green: cassiterite. Dark green: Cassiterite and coltan. Blue: Coltan. Grey: Wolfram.



Cross section illustrating the water management in Tailing Management Facility.

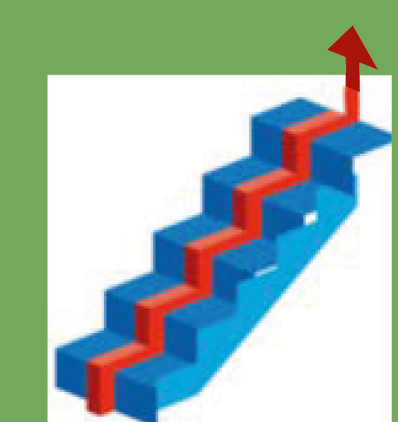


## SIGNIFICANCE FOR THE PEOPLE AND THE ENVIRONMENT

Guidelines for effective tailings management are essential because poor tailings management practices impact negatively to the environment. This guideline aims to provide fundamental knowledge on proper tailings management procedures and practices to the mine operators and other relevant stakeholders. The guideline gives a description of the site selection, TMF design and sizing, tailings disposal and their proper management. These guidelines also will help improve the quality of mining inspections conducted by RMB and REMA.



The Guidelines of Tailings Management in the Small-Scale Mining Sector in Rwanda.



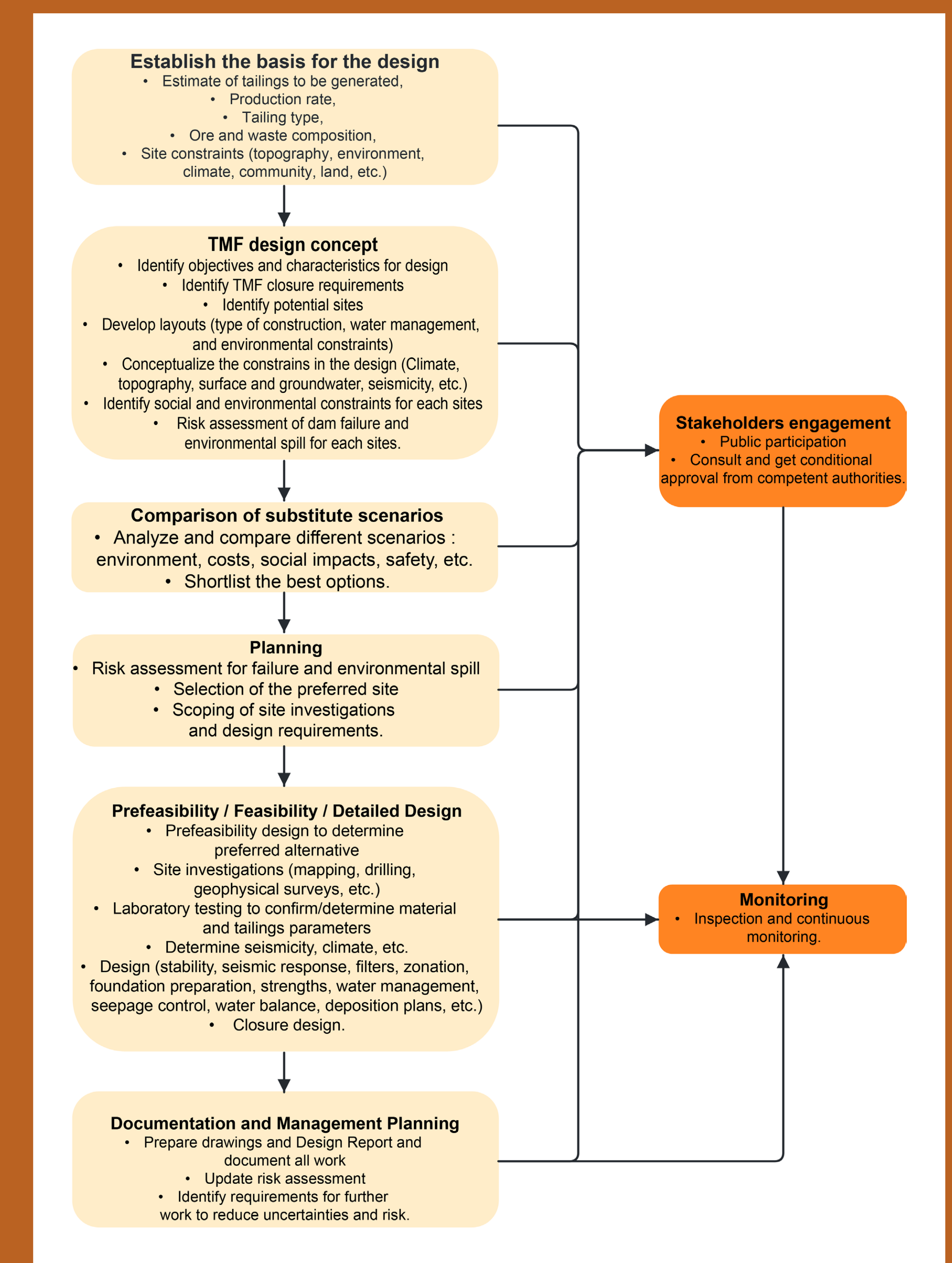
## RESULTS AND ACHIEVEMENTS

The background information on the tailings management in small-scale mining in Rwanda has been developed and stakeholders were consulted during the first phase of the development of this guidelines in the document V1.0. This second phase of developing the guideline focuses on the instruction for selecting and steps to take for designing a TMF and present a flow chart describing all steps for designing, operating, closing and reclaiming a TMF.



## THE WAY FORWARD

Additional stakeholder engagement should be conducted in order to disseminate this guideline and allow the public to participate in the discussions. Once approved, implementation of the guideline regulation should be enforced appropriately, with regular review process in order to improve the regulation.



Flow chart describing all steps for designing, operating, closing and reclaiming a TMF.