

# RWANDA



## Guidelines of tailings management in the small-scale mining sector in Rwanda

Rwanda Mines Petroleum and Gas Board (RMB)



Sheriffa Shengero  
Bienvenu Mizero  
Yves Mugoboka

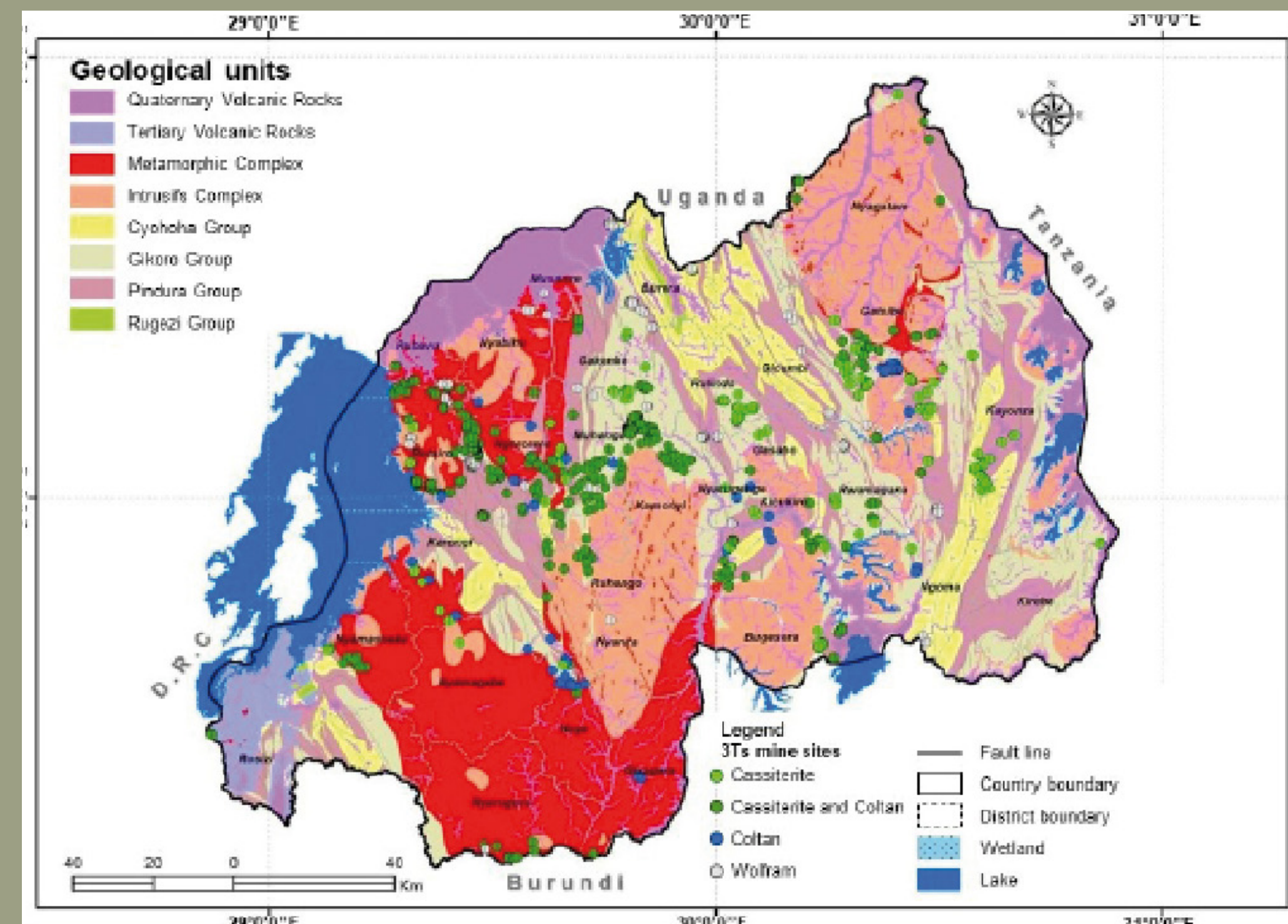
Pacifique Abimana  
Charles Cyiza  
Joyeuse Ukeye

**INTERNATIONAL TRAINING PROGRAMME 308**  
Mine Water & Mine Waste Management



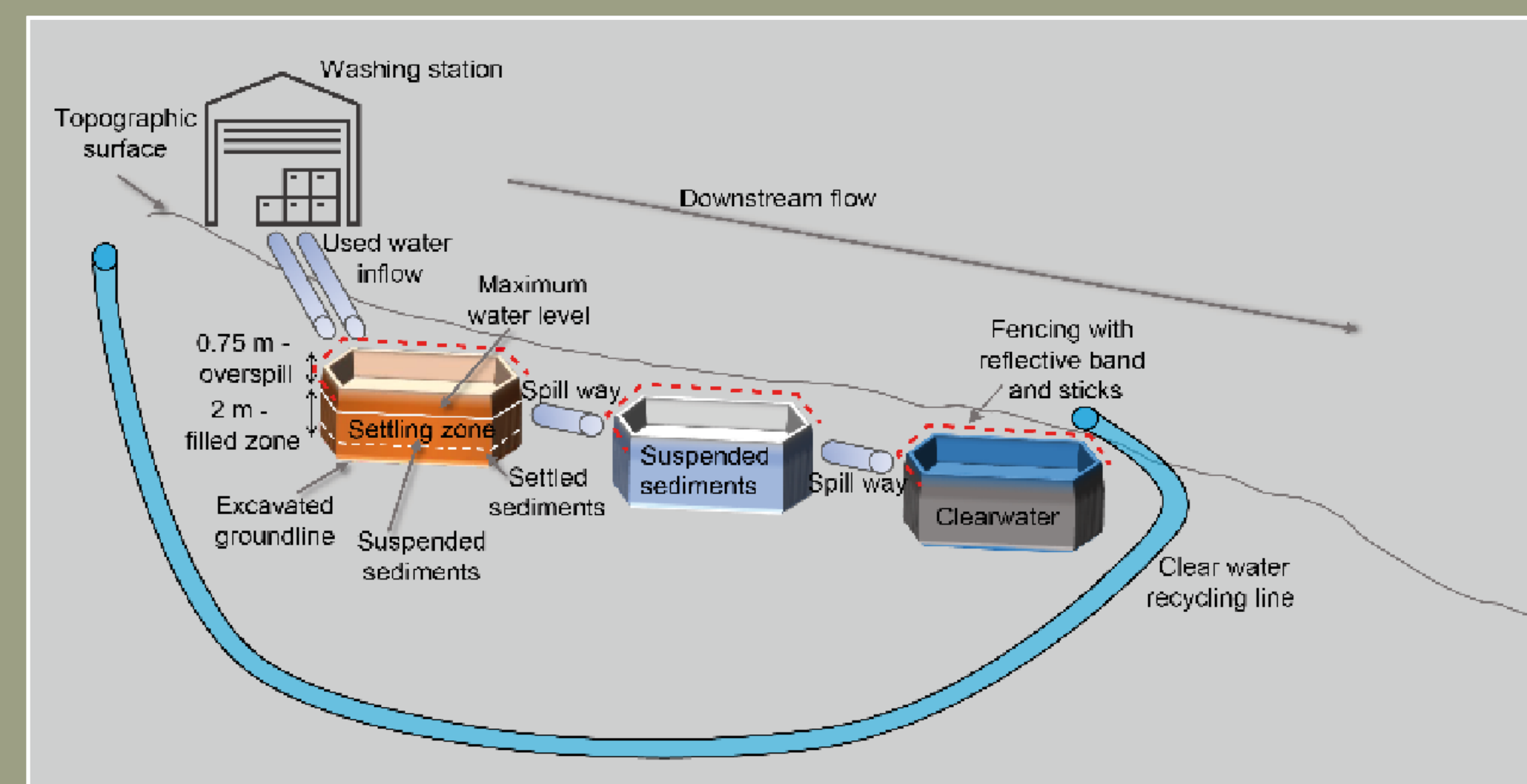
## THE CHANGE PROJECT

Rwanda is one of the largest producers of 3Ts. Rwanda is one of the largest producers of 3Ts. The mining sector is now Rwanda's second largest export revenue earner. Among the mineral commodities mined in Rwanda is cassiterite, coltan, wolframite, gold, beryl, lithium, amethyst, amblygonite and tourmaline.



Among the challenges faced by the mining sector in Rwanda is the poor tailings management. Rwanda Mines Petroleum and Gas Board is developing guidelines for appropriate tailings management in the mining sector.

To ensure that guidelines are respected by mining operators, trainings for mine operators and other relevant stakeholders will be put in place for capacity building and to ensure their effective compliance to the tailing management guidelines.



## SIGNIFICANCE FOR THE PEOPLE AND THE ENVIRONMENT

Guidelines for effective tailings management are essential because poor tailings management practices are a nuisance to the environment.

This guideline aims to provide fundamental knowledge on proper tailings management procedures and practices to the mine operators and other relevant stakeholders.

The guideline gives a description of the site selection, its design and sizing, tailings disposal and their proper management. These guidelines also will help improve the quality of mining inspections conducted by RMB and REMA on mine sites.



## RESULTS AND ACHIEVEMENTS

The background information on the tailings management in small-scale mining in Rwanda has been developed and stakeholders were consulted during this phase.

The first two sections of the project were developed and completed, and consultation with the next ITP team from Rwanda will continue to work on the next sections of the guidelines.

**Tailing storage facility log sheet**

Name of person completing the log sheet: .....

Site name: .....

Coordinates: Easting: ..... Northing: .....

Layout: ☐ Side hill ☐ Cross valley ☐ Other

TSF size Length (m): ..... Width (m): ..... Depth (m): .....

Lining: ☐ Yes ☒ No

Metal(s) or mineral(s) processed: .....

Known hazardous chemicals: .....

TSF conditions

(1) Operational / (2) Decommissioned

## THE WAY FORWARD

We recommend for the next team to develop the remaining sections and for the guidelines to be shared with the stakeholders for public review. After the approval of the guidelines, a checklist to be used for inspections for regulators as well as a leaflet for the mine operators will be developed.

We also recommend the ITP program to keep on supporting the dissemination of the guidelines through trainings and workshops for capacity building for both the mine regulators and the mine operators and other relevant stakeholders.

